

Argo
8x8 Avenger



ARGO

AVENGER

PARTS MANUAL

From Serial # ...23920

Foreword

ODG has prepared this parts manual for the AVENGER model to assist both qualified mechanics and vehicle owners in ordering correct, quality replacement ARGO parts.

Proper and regular service, and replacing old, worn or broken parts with the correct ARGO replacement parts, are both essential to prolonging the life of the ARGO. Please refer to this parts manual before ordering any replacement part.

All information contained in this AVENGER Parts Manual is based on the latest product specification available at time of printing. If your AVENGER differs from the specifications contained in this manual, contact Ontario Drive & Gear Limited for information.

ODG reserves the right to alter specifications on the AVENGER model at any time, without obligation or prior notification.

Reproduction of this AVENGER Parts Manual, in whole or in part, is prohibited without prior written permission from Ontario Drive & Gear Limited.

Vehicle Identification

AVENGER - Serial Nos. V23920

Explanation of Parts Manual Format

- Ref** - Reference number between assembly diagram and component parts list
- Part No.** - Argo replacement part number for identification and re-ordering
- Description** - Part description for identification and re-ordering
- Qty** - Indicates the quantity of a part used in an assembly

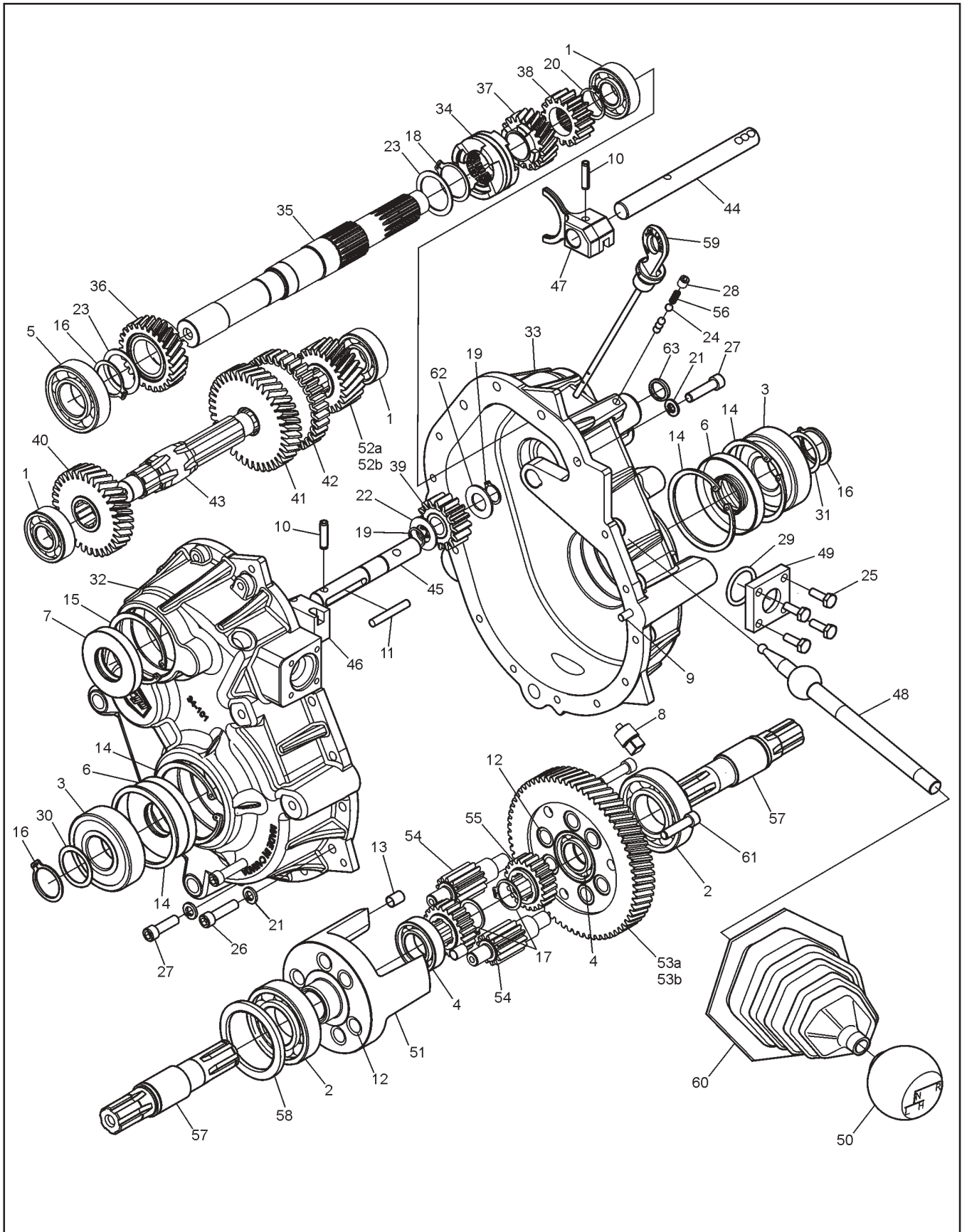


Using the Parts Manual

1. Find the major vehicle assembly in the Table of Contents on this page, and turn to that section.
2. Locate the part in the illustration that you wish to order.
3. Refer to the parts list in that section.
4. Find the correct part number (Part No.), part description (Description) and correct quantity (Qty).
5. Use *only* this information to order ARGO replacement parts. *DO NOT* attempt to order a replacement part by reference number or page number.

Table of Contents

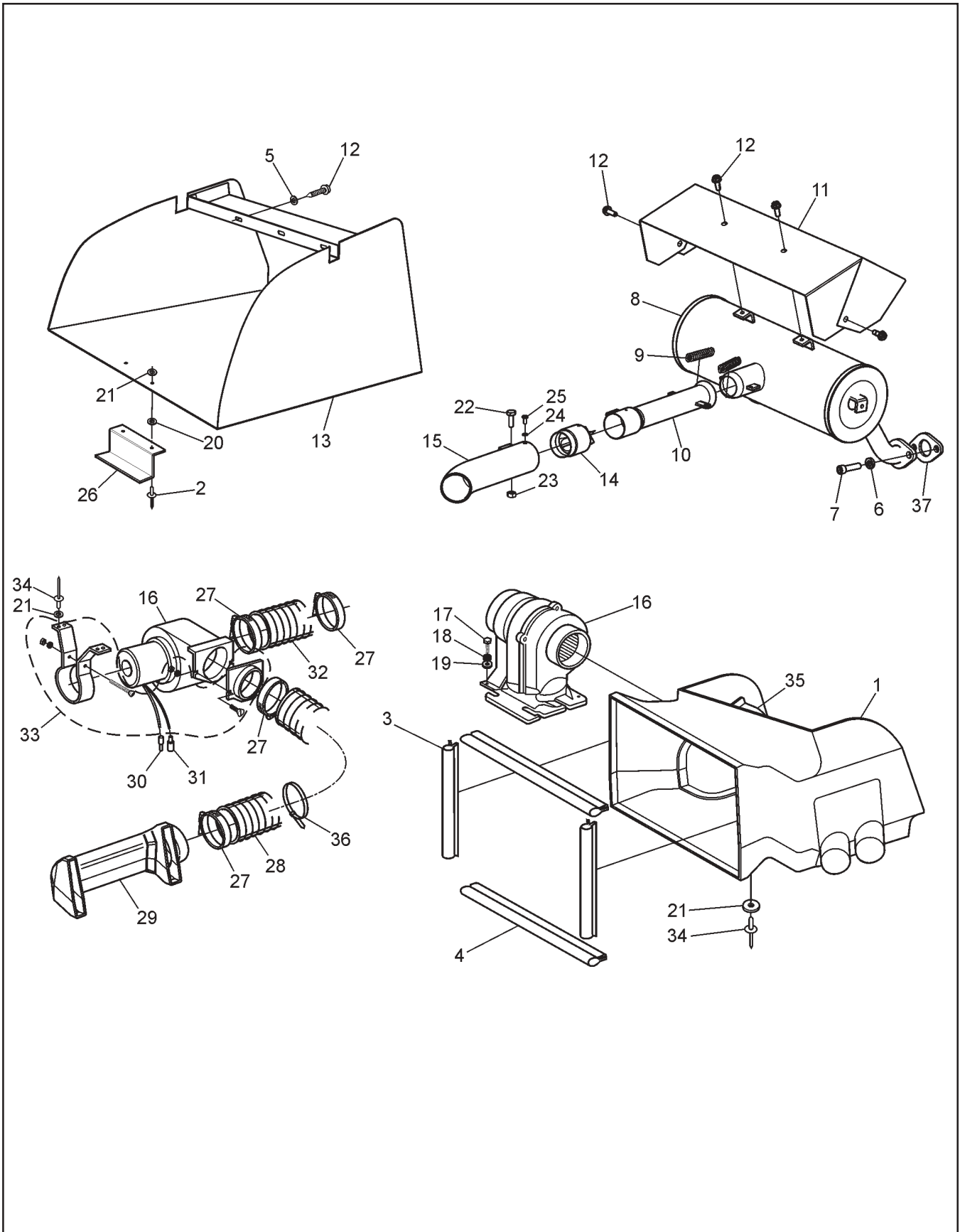
| | |
|---------------------------------------|----|
| Foreword | i |
| Vehicle Identification | i |
| Using the Parts Manual | ii |
| 1.0 Transmission | 1 |
| 2.0 Intake and Exhaust System | 3 |
| 3.0 Clutch System | 5 |
| 4.0 Power Pack Assembly | 7 |
| 5.0 Steering & Brake System | 9 |
| 6.0 CE Kit - 850-70 (Opt.) | 11 |
| 7.0 Vehicle Body & Firewall | 13 |
| 8.0 Frame & Drive System | 15 |
| 9.0 Fuel System & Seat Assembly | 17 |
| 10.0 Electrical System | 19 |



Avenger Parts Manual

1.0 Transmission

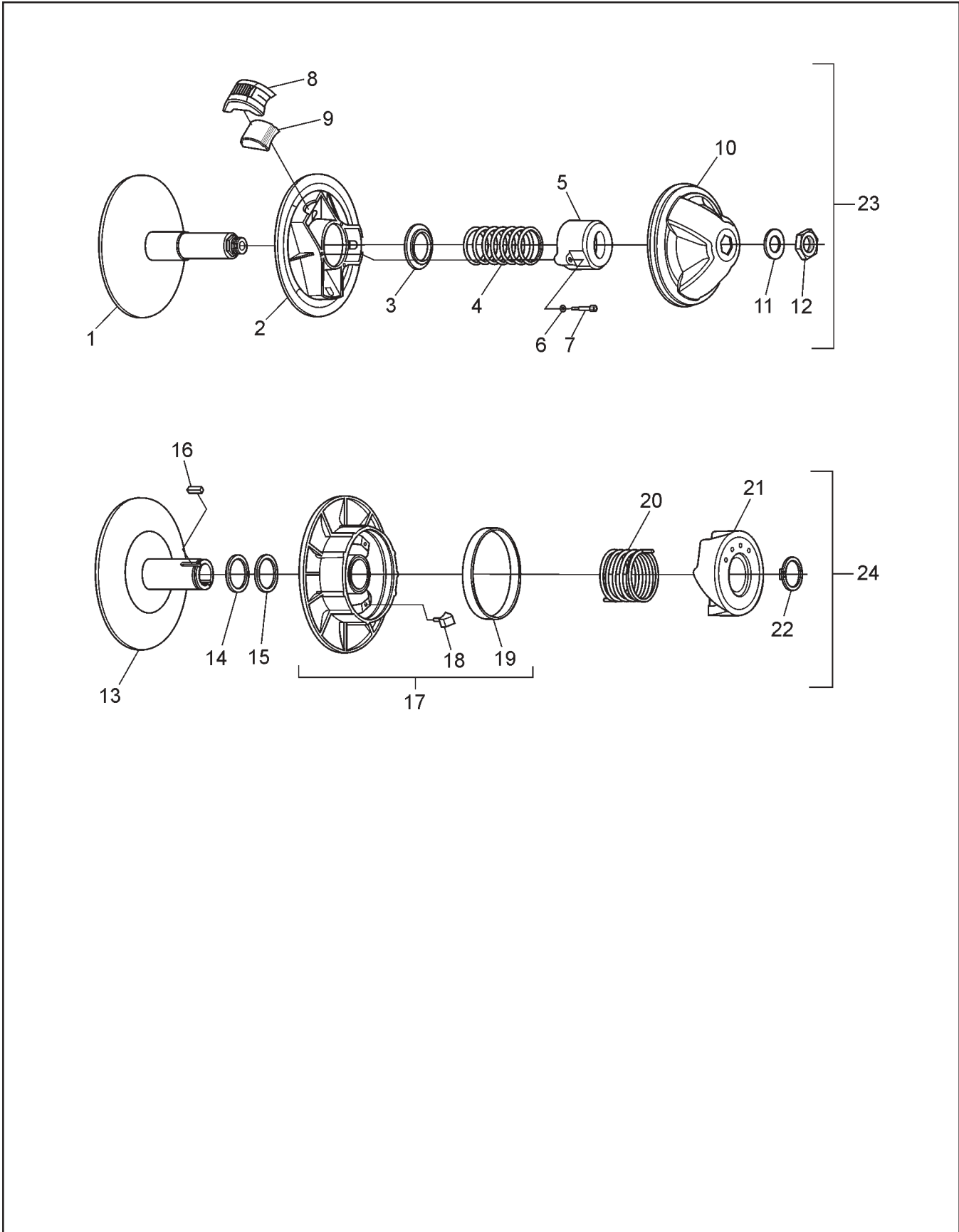
| Ref. | Qty. | Part # | Description | Ref. | Qty. | Part # | Description |
|------|------|------------|--------------------------------|------|------|--------|----------------------------------|
| | 1 | 34-100 | Transmission Assembly | 40 | 1 | 34-109 | Gear, Helical - HI 12DP 33T |
| | 1 | 34-100-3.3 | Transmission Assembly | 41 | 1 | 34-110 | Gear, Helical - LOW 12DP 39T |
| 1 | 3 | 101-01 | Bearing, Ball 6204Z-C3 | 42 | 1 | 34-111 | Gear, Reverse - 10DP 33T |
| 2 | 2 | 101-03 | Bearing, Ball 6207-C3 | 43 | 1 | 34-112 | Shaft, Spline |
| 3 | 2 | 101-05 | Bearing, Ball 6306LLU-C3/2A | 44 | 1 | 34-113 | Shaft, Shift - Forward |
| 4 | 2 | 101-15 | Bearing, Ball 6005-C3 | 45 | 1 | 34-114 | Shaft, Shift - Reverse |
| 5 | 1 | 101-16 | Bearing, Ball 6206-C3 | 46 | 1 | 34-115 | Block, Shift |
| 6 | 2 | 102-03 | Seal,Oil WBS 30x72x10 NB D/LIP | 47 | 1 | 34-116 | Fork, Shift |
| 7 | 1 | 102-05 | Seal,Oil WBS 30x62x10 NB D/LIP | 48 | 1 | 34-117 | Lever, Shift |
| 8 | 1 | 103-02 | Plug, Magnetic 3/8-18NPT SQ.HD | 49 | 1 | 34-118 | Plate, Shifter |
| 9 | 2 | 104-03 | Pin, Dowel 1/4x7/8 | 50 | 1 | 34-121 | Knob, Shift - w/Argo Logo |
| 10 | 2 | 104-39 | Pin, Spring - 1/4 x 1.0 | 51 | 1 | 34-122 | Cage, Differential |
| 11 | 1 | 104-40 | Pin, Dowel - 1/4 x 1.75 | 52a | 1 | 34-123 | Pinion, Helical - 25T - 2.6 |
| 12 | 12 | 105-03 | Bushing, Oilite - 1/2x3/4 | 52b | 1 | 34-125 | Pinion, Helical - 21T - 3.3 |
| 13 | 3 | 105-23 | Bushing, Dowel - .312 x .5 | 53a | 1 | 34-124 | Gear Plate - 66T - 2.6 |
| 14 | 4 | 106-03 | Retaining Ring HO-281PA | 53b | 1 | 34-126 | Gear Plate - 70T - 3.3 |
| 15 | 1 | 106-05 | Retaining Ring HO-244-PA | 54 | 6 | 34-13 | Gear, Planet - 12T |
| 16 | 3 | 107-02 | Retaining Ring SH-0118-PA | 55 | 2 | 34-14 | Gear, Sun - 21T |
| 17 | 2 | 107-04 | Retaining Ring SH-0098-PA | 56 | 2 | 34-32 | Spring, Comp. 0.22x.50 |
| 18 | 1 | 107-10 | Retaining Ring SH-0125-PA | 57 | 2 | 34-98 | Shaft, Output - Splined |
| 19 | 2 | 107-11 | Retaining Ring | 58 | 1 | 114-01 | Washer, Shim 2.25 x 2.81 x .02 |
| 20 | 1 | 107-12 | Retaining Ring SH-0100-PA | 59 | 1 | CE-035 | Dipstick - with Breather - 190mm |
| 21 | 15 | 108-05 | Lockwasher 5/16 Split-Ring Zn | 60 | 1 | 609-38 | Boot, Shifter |
| 22 | 1 | 108-78 | Washer, Thrust | 61 | 3 | 112-64 | SHCS, 5/16-18 x 1.25 |
| 23 | 2 | 108-79 | Washer, Thrust | 62 | 1 | 108-81 | Washer, Retaining Thrust |
| 24 | 5 | 109-05 | Ball, Steel 6mm 62-67 Rc | 63 | 1 | 113-16 | O-Ring #AS568-014-70BN |
| 25 | 4 | 112-04 | HHCS 1/4-20x3/4 GR2 Zn | | | | 5/8"OD x 1/2"ID x 1/16" Thk |
| 26 | 13 | 112-143 | SHCS 5/16 x 1.25 Zn | | | | |
| 27 | 2 | 112-144 | SHCS 5/16 x 1.0 Zn | | | | |
| 28 | 1 | 112-145 | SHSS 5/16 - 18 x 3/8 | | | | |
| 29 | 1 | 113-11 | O-Ring #AS568-216-70BN | | | | |
| 30 | 1 | 114-04 | Washer, Shim 1.19x1.50x.04 | | | | |
| 31 | 1 | 114-05 | Washer, Shim 1.19x1.50x.02 | | | | |
| 32 | 1 | 34-101 | Housing, Transmission - L | | | | |
| 33 | 1 | 34-102 | Housing, Transmission - R | | | | |
| 34 | 1 | 34-127 | Clutch, Dog | | | | |
| 35 | 1 | 34-104 | Shaft, Input - 19/15T Spline | | | | |
| 36 | 1 | 34-128 | Pinion, Helical - HI 12DP 26T | | | | |
| 37 | 1 | 34-129 | Pinion, Helical - LO 12DP 20T | | | | |
| 38 | 1 | 34-107 | Pinion, Reverse - 10 DP 16T | | | | |
| 39 | 1 | 34-108 | Gear, Idler - Rev - 10DP 16T | | | | |



| Ref. | Qty. | Part # | Description |
|------|------|-----------|--|
| 1 | 1 | 809-03 | Duct, Intake |
| 2 | 2 | 120-13 | Rivet, 3/16 x 5/8 - Black |
| 3 | 2 | 809-05 | Seal, Radiator - 10.25" LG |
| 4 | 2 | 809-06 | Seal, Radiator - 16.25" LG |
| 5 | 3 | 108-01 | Washer, Fender 1/4 BS x1.25 OD |
| 6 | 4 | 108-05 | Lockwasher 5/16 Split Ring Zn |
| 7 | 4 | 117-73 | Nut, M8x1.25 Zn |
| 8 | 1 | 607-105 | Muffler |
| 9 | 2 | 126-57 | Spring, Extension- 7/16x2.14 |
| 10 | 1 | 607-106 | Pipe, Flared - Asm |
| 11 | 1 | 807-85 | Shield, Heat - Muffler |
| 12 | 7 | 112-19 | Screw, IHWH T/C Slot 1/4-20x1/2 |
| 13 | 1 | 607-109 | Duct, Exhaust |
| 14 | 1 | 607-103 | Spark Arrester |
| 15 | 1 | 607-107 | Pipe, Tail - Asm |
| 16 | 1 | 125-91 | Blower Fan |
| 17 | 4 | 103-47 | HHCS, #10-24x1/2 |
| 18 | 4 | 120-05 | Washer, .19x.50x.04 |
| 19 | 4 | 108-59 | Lockwasher #10 Int. Tooth |
| 20 | 2 | 125-58 | Washer, Fibre - W-77F |
| 21 | 14 | 120-04 | Washer, .19 x .50 x .08 Zn |
| 22 | 1 | 112-04 | HHCS 1/4-20 x 3/4 Gr2 Zn |
| 23 | 1 | 117-81 | Locknut, 2-way 1/4-20 Zn |
| 24 | 1 | 108-77 | Lockwasher, #8 External Tooth |
| 25 | 1 | 112-43 | Screw IHWH #8 x 3/8 |
| 26 | 1 | 707-44 | Support, Exhaust Duct - Avenger |
| 27 | 4 | 125-35 | Clamp, Gear 3.50" HF-52 |
| 28 | 1 | 127-139 | Hose, Brake Fan Discharge |
| 29 | 1 | 127-134 | Duct, Brake Cooling |
| 30 | 1 | 118-02 | Terminal, Male #76-1251 |
| 31 | 1 | 118-03 | Terminal, Female #76-1289 |
| 32 | 1 | 127-140 | Hose, Brake Fan Inlet |
| 33 | | 125-92 | Adpt. & Mounting Kit - includes the following: |
| | 1 | | Mounting Bracket |
| | 1 | | Nut, #10-32 |
| | 1 | | Lockwasher, 3/16" |
| | 1 | | Screw, #10-32x2" |
| | 2 | | Nut, 1/4-20 |
| | 2 | | Lockwasher, 1/4" |
| | 2 | | Screw, 1/4-20x5/8" |
| | 1 | | Adaptor, 3" dia. |
| 34 | 13 | 120-09 | Rivet, 3/16 x 1.0 Black |
| 35 | 1 | 809-04 | Shroud, Intake Duct |
| 36 | 1 | 100-102 | Tie Wrap, 14" - White |
| 37 | 2 | 24 041 49 | Gasket, Exhaust Manifold |

3.0 Clutch System

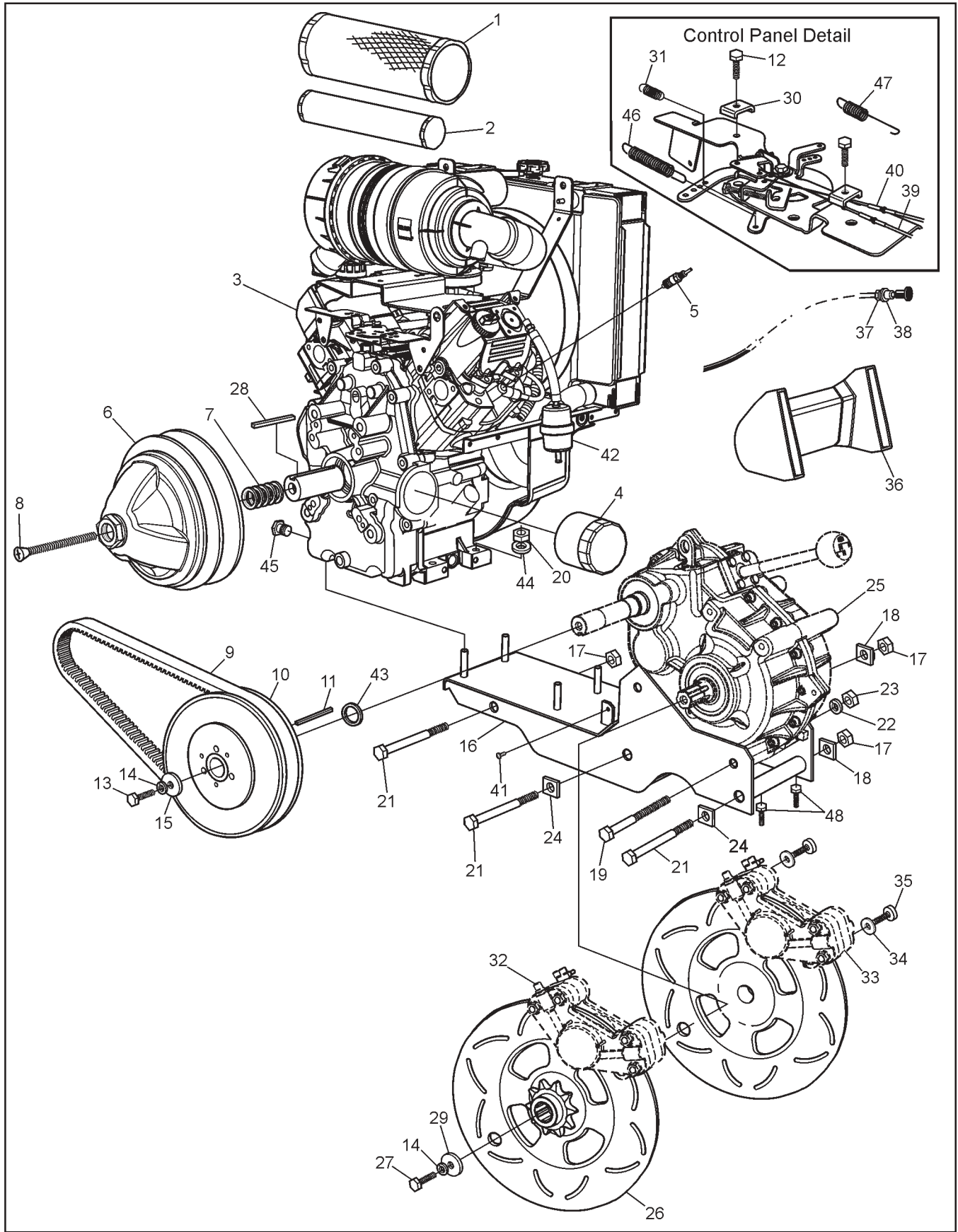
Avenger Parts Manual



| Ref. | Qty. | Part # | Description |
|------|--------|--------------|-------------------------|
| 1 | 1 | 0405-0075 | Flange, Fixed |
| 2 | 1 | 0410-0026 | Flange, Sliding |
| 3 | 1 | 0150-1014 | Spring Guide Washer |
| 4 | 1 | 0451-1114 | Spring |
| 5 | 1 | 0440-0005 | Spring Cover |
| 6 | 3 | 420-2453-700 | Lockwasher |
| 7 | 3 | 0080-0021 | Screw, Cap |
| 8 | 3 | 0130-3009 | Block |
| 9 | 3 | 0135-3065 | Weight (275gr) |
| 10 | 1 | 0115-3042 | Cap |
| 11 | 1 | 0080-0153 | Washer, Zn |
| 12 | 1 | 0080-0100 | Nut |
| 13 | 1 | 5105-0045 | Flange, Fixed |
| 14 | 1 | ASA-1 | Washer, Shim 1.2 |
| 15 | as req | ASA-1-S | Washer, Shim 0.6 |
| 16 | 1 | ASK-5 | Key, Square |
| 17 | 1 | 5110-0020 | Flange, Sliding |
| 18 | 3 | ANS-2-T | Cam Shoe |
| 19 | 1 | 5140-3006 | Cam Bushing |
| 20 | 1 | 5051-1110 | Spring |
| 21 | 1 | 5120-2043 | Cam |
| 22 | 1 | 371-9031-000 | Retaining Ring, Outside |
| 23 | 1 | 127-135 | Clutch, Driver |
| 24 | 1 | 127-136 | Clutch, Driven |

4.0 Power Pack Assembly

Avenger Parts Manual



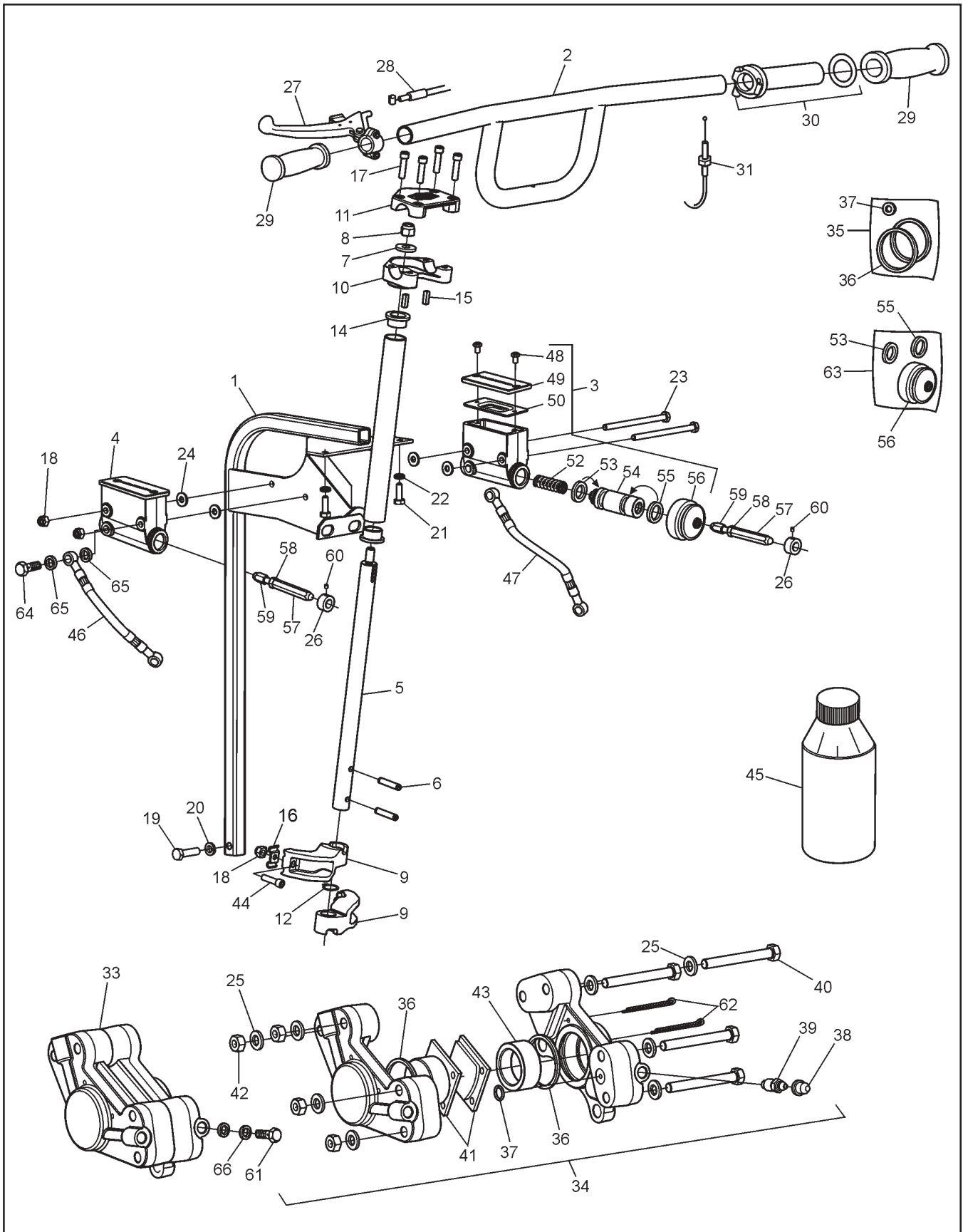
Avenger Parts Manual

4.0 Power Pack Assembly

| Ref. | Qty. | Part # | Description | Ref. | Qty. | Part # | Description |
|------|------|------------|--|------|--------|-----------|---|
| 1 | 1 | 25 083 01 | Filter, Air | 34 | 4 | 108-23 | Washer .42 x .81 x .06 Gr8 Zn |
| 2 | 1 | 25 083 04 | Element, Inner | 35 | 4 | 103-41 | SHCS 3/8-16 x 1.25 Zn |
| 3 | 1 | LH690-0014 | Kohler 26 HP Engine | 36 | | | See Section 2.0 Intake & Exhaust |
| 4 | 1 | 12 050 01 | Filter, Oil | 37 | 1 | 117-68 | Nut, Jam 3/8-24 UNF Zn |
| 5 | | 66 132 01 | Sparkplug | 38 | 1 | 108-32 | Lockwasher 3/8 Int. Tooth |
| 6 | | | See Section 3.0 Clutch System | 39 | 1 | 612-92 | Cable Ass'y, Choke |
| 7 | 5 | 114-04 | Washer, Shim 1.19x1.50x.04 | 40 | 1 | 612-116 | Cable Asm., Throttle – Avenger |
| 8 | 1 | 112-152 | FHSC, 7/16-20 x 4.0" LG | 41 | 2 | 103-71 | Screw, IHWH T/C 1/4-20 x 1.25 Zn |
| 9 | 1 | 127-137 | Drive Belt - 10.5" Cen. Dist | 42 | 1 | 125-64 | Filter, Fuel |
| 10 | | | See Section 3.0 Clutch System | 43 | as req | 108-36 | Washer, 1.03 x 1.37 x .06 Zn |
| 11 | 1 | 110-09 | Key 1/4 x 1/4 x 30 | 44 | 4 | 108-26 | Washer, .43 x 1.02 x .09 Zn |
| 12 | 1 | M-545016 | Screw, Clamp Cable (Kohler #) | 45 | | 112-156 | Plug, Oil Drain 3/8-18NPT Hex |
| 13 | 1 | 103-34 | HHCS 3/8-16 x 1.25 Gr5 Zn | 46 | 1 | 24 089 46 | Spring, Governer (Kohler #) |
| 14 | 3 | 108-06 | Lockwasher 3/8 Split Ring Zn | 47 | 1 | 127-49 | Spring, Extension |
| 15 | 1 | 108-46 | Washer .40 x 1.37 x 1.2 Hi- Carbon | 48 | 2 | 103-53 | HHCS 3/8-16 x 3.0 Full Thread |
| 16 | 1 | 806-35 | Frame Ass'y - Power Pack | | | | |
| 17 | 3 | 117-83 | Locknut, Stover 5/8-11 Zn | | | | |
| 18 | 2 | 811-09 | Washer, Square - .64 ID | | | | |
| 19 | 2 | 103-20 | HHCS 1/2-13 x 6.5 Gr5 Zn | | | | |
| 20 | 4 | 117-29 | Locknut, Nylon 3/8-16 Zn | | | | |
| 21 | 3 | 112-58 | HHCS 5/8-11 x 7.5 Gr5 Zn | | | | |
| 22 | 2 | 108-07 | Lockwasher 1/2 Split Ring Zn | | | | |
| 23 | 2 | 117-06 | Nut, Fin Hex 1/2-13 Zn | | | | |
| 24 | 2 | 811-15 | Washer, Square Lock .64 ID | | | | |
| 25 | | | See Section 1.0 Transmission | | | | |
| 26 | 2 | 606-74 | Disc, Brake-Splined #60-10T | | | | |
| 27 | 2 | 103-18 | HHCS 3/8-24 x 1.25 Gr5 Zn | | | | |
| 28 | 1 | 110-18 | Key 1/4 x 1/4 x 1.75 | | | | |
| 29 | 2 | 108-18 | Washer .40 x 1.37 x .12 Zn | | | | |
| 30 | 1 | 12 237 01 | Clamp, Cable (Kohler #) | | | | |
| 31 | 1 | 24 089 51 | Spring, Throttle (Kohler #) | | | | |
| 32 | | | See Section 5.0 Steering & Brake System | | | | |
| 33 | | | See Section 5.0 Steering & Brake System | | | | |

5.0 Steering & Brake System

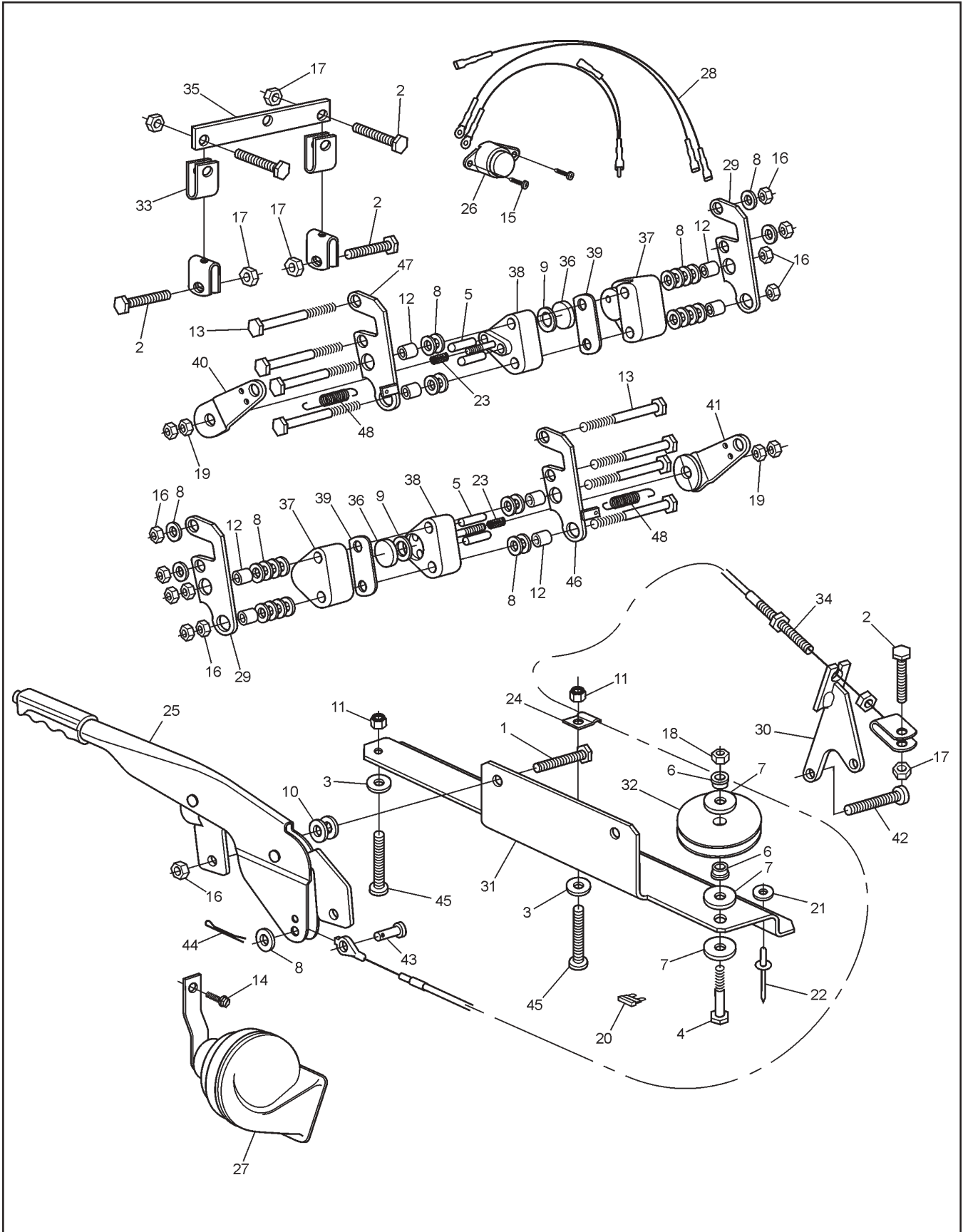
Avenger Parts Manual



Avenger Parts Manual

5.0 Steering & Brake System

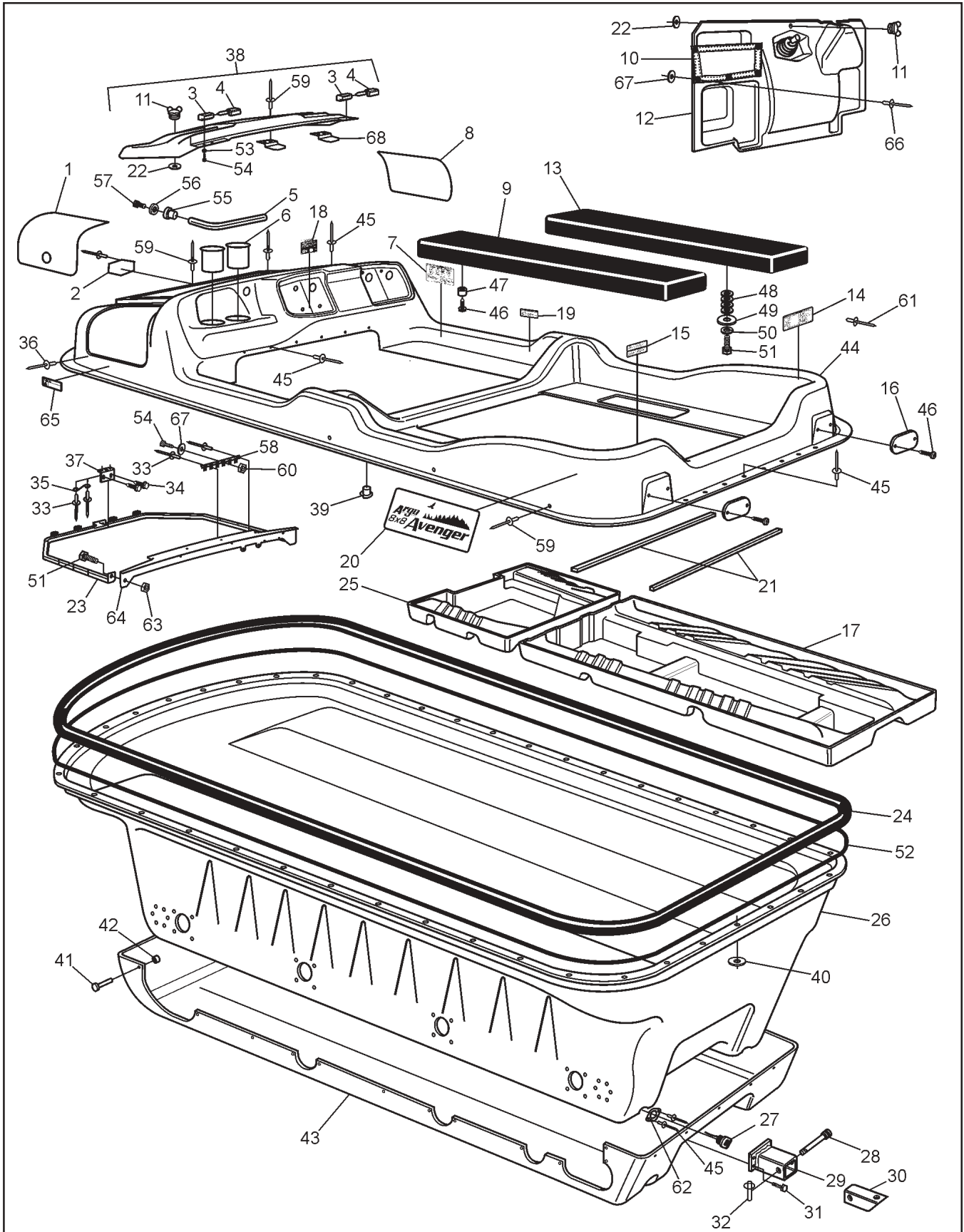
| Ref. | Qty. | Part # | Description | Ref. | Qty. | Part # | Description |
|------|------|---------|---------------------------------------|------|------|---------|---|
| 1 | 1 | 612-123 | Frame Assembly, Steering Column | 41 | 1 | 170-03 | Pad Set (4), Brake - Non-Asbestos |
| 2 | 1 | 612-107 | Handlebar Assembly | 42 | 2x4 | 117-03 | Nut, Fin Hex 5/16-18 Zn |
| 3 | 1 | 165-08 | Master Cylinder, Grimeca - R | 43 | 2x2 | 168-01 | Piston, Knott Caliper |
| 4 | 1 | 165-07 | Master Cylinder, Grimeca - L | 44 | 2 | 112-159 | BHCS, 1/4-20 x 1.0, Plated |
| 5 | 1 | 612-128 | Shaft, Steering - Avenger | 45 | | 126-19 | Fluid, Brake-Silicon Dot 5 - .35L |
| 6 | 2 | 104-42 | Pin, Spring 1/4 x 1.5" | 46 | 1 | 163-03 | Hose Asm, Hydraulic - Left - Avenger |
| 7 | 1 | 108-47 | Washer, .39 x .94 x .13 Zn Di-chr | 47 | 1 | 163-04 | Hose Asm, Hydraulic - Right - Avenger |
| 8 | 1 | 117-29 | Locknut, Nylon 3/8-16 Zn | 48 | 2x2 | 103-47 | HHMS #10-24 x 1/2" Zn |
| 9 | 2 | 612-124 | Arm, Steering | 49 | 2x1 | 168-17 | Cover |
| 10 | 1 | 612-106 | Clamp, Lower Handlebar | 50 | 2x1 | 168-16 | Cover, Rubber |
| 11 | 1 | 612-105 | Clamp, Upper Handlebar | 52 | 2x1 | 162-08 | Spring, Comp. 17.3 x 49.3mm |
| 12 | 1 | 106-07 | Ring, Retaining SH-0075PA | 53 | 2x1 | | Seal, Primary, 19mm (See Ref. 63) |
| 14 | 2 | 105-16 | Bushing, Oilite - 3/4 x 1/2 | 54 | 2x1 | 168-10 | Piston 19mm dia. |
| 15 | 2 | 110-17 | Key, 3/16 x 3/16 x .625 | 55 | 2x1 | | Seal, Secondary, 19mm (See Ref. 63) |
| 16 | 2 | 128-10 | Retainer, Handbrake Cable | 56 | 2x1 | | Boot, Rubber (See Ref. 63) |
| 17 | 4 | 112-47 | SHCS, 1/4-20 x 1.0 Zn | 57 | 2 | 812-30 | Pin, Female |
| 18 | 4 | 117-27 | Locknut, Nylon 1/4-20 Zn | 58 | 2 | 117-03 | Nut, Fin Hex 1/4-20 Zn |
| 19 | 1 | 103-38 | HHCS 5/16-18 x 1.25 Gr5 Zn | 59 | 2 | 812-31 | Fin, Male |
| 20 | 1 | 108-05 | Lockwasher 5/16 Split-Ring Zn | 60 | 2 | 112-02 | SHSS 10-24x1/4 Knurl Cup PT, PL |
| 21 | 2 | 112-04 | HHCS 1/4-20 x 3/4 Gr2 Zn | 61 | 2 | 160-45 | Bolt, Banjo |
| 22 | 2 | 108-03 | Lockwasher 1/4 Split Ring Zn | 62 | 2x2 | 168-07 | Pin, Cotter 1/8 x 3.00 Zn |
| 23 | 2 | 103-66 | HHCS, 1/4-20 x 4.0 Gr5 Zn | 63 | 2x1 | 161-25 | O-Ring Kit - Master Cylinder - Grimeca (incl. Ref. 53, 55 & 56) |
| 24 | 4 | 108-08 | Washer, .28 x .62 x .04 Zn | 64 | 2 | 160-44 | Bolt, Banjo - M10 x 1,0 x 21,0 |
| 25 | 2x8 | 108-24 | Washer, .34 x .70 x .06 Zn | 65 | 4 | 160-01 | Washer, Copper - 1,5 x 10,0 x 14,0 |
| 26 | 2 | 812-17 | Collar | 66 | 4 | 160-04 | Washer, Copper 2.3 x 10.0 x 16.0 |
| 27 | 1 | 128-17 | Lever Assembly, Handbrake, Spring | | | | |
| 28 | 1 | 128-09 | Cable Assembly, Handbrake | | | | |
| 29 | 2 | 127-35 | Grip, Molded | | | | |
| 30 | 1 | 127-81 | Throttle Twist Grip | | | | |
| 31 | 1 | 612-116 | Cable Asm., Throttle - Avenger | | | | |
| 33 | 1 | 166-10 | Caliper, Hydraulic Brake - L w/o pads | | | | |
| 34 | 1 | 166-11 | Caliper, Hydraulic Brake - R w/o pads | | | | |
| 35 | 2 | 161-05 | O-ring Kit, Knott Caliper | | | | |
| 36 | 2 | | Seal, Piston | | | | |
| 37 | 2 | | Seal, Rubber | | | | |
| 38 | 2x1 | 168-20 | Plug, Rubber | | | | |
| 39 | 2x1 | 168-02 | Screw, Bleeding, Knott Caliper | | | | |
| 40 | 2x4 | 112-154 | SHCS, 5/16-18 x 2.75 Zn | | | | |



| Ref. | Qty. | Part # | Description |
|------|------|---------|--|
| 1 | 2 | 103-06 | HHCS 5/16-18x1.0 Gr5 Zn |
| 2 | 5 | 103-08 | HHCS 1/4-20x1.0 Zn |
| 3 | 2 | 108-42 | Washer .21x1.0x.06 Zn |
| 4 | 1 | 103-82 | HHCS 3/8-16x1.5 Gr5 Zn |
| 5 | 4 | 104-41 | Pin, Rounded Dowel 5/16x1 |
| 6 | 2 | 105-18 | Bushing, Oilite - 3/8x1/4 |
| 7 | 3 | 108-15 | Washer .42 x .81 x .05 Zn |
| 8 | 32 | 108-24 | Washer .34x.70x.06 Zn |
| 9 | 2 | 108-35 | Washer .53x1.06x.09 Zn |
| 10 | 4 | 108-47 | Washer .39x.94x.13 Zn Di-Chro |
| 11 | 2 | 117-10 | Locknut, 10-24 N/I Zn |
| 12 | 8 | 108-71 | Spacer-5/16 IDx7/16 ODx13/32 L |
| 13 | 8 | 112-132 | HHCS 5/16-18 x 3.25 Gr5 Zn |
| 14 | 1 | 112-19 | Screw,IHWH T/C Slot 1/4-20x1/2 |
| 15 | 2 | 112-56 | T/S Pan Head Phil #10x3/4 A Zn |
| 16 | 10 | 117-21 | Locknut, Nylon 5/16-18 Zn |
| 17 | 5 | 117-27 | Locknut, Nylon 1/4-20 Zn |
| 18 | 1 | 117-29 | Locknut, Nylon 3/8-16 Zn |
| 19 | 4 | 117-46 | Locknut, 2-way 5/16-24 Zn |
| 20 | 1 | 118-52 | Fuse, 10A 2-Prong (AT010) |
| 21 | 4 | 120-04 | Washer .19x.50x.08 Zn |
| 22 | 4 | 120-09 | Rivet - 3/16 x 1.0 Black |
| 23 | 2 | 128-12 | Spring, Comp .437 x .62" Lg. |
| 24 | 1 | 128-13 | Clip, Conduit-Anti |
| 25 | 1 | 809-147 | Lever, Parking Brake |
| 26 | 1 | 848-86 | Button, Horn |
| 27 | 1 | 848-87 | Horn, Electric |
| 28 | 1 | 848-88 | Wire Harness, Horn |
| 29 | 2 | 850-71 | Bracket, Mechanical Brake |
| 30 | 1 | 850-72 | Bracket Asm, Parking/Brake |
| 31 | 1 | 850-78 | Bracket, Parking Lever |
| 32 | 1 | 850-79 | Pulley, Parking Brake Cable |
| 33 | 2 | 850-80 | Cable, Parking Brake Equalizer |
| 34 | 1 | 850-81 | Cable, Parking Brake |
| 35 | 1 | 850-82 | Flat Bar, Equalizer |
| 36 | 2 | 850-83 | Puck, Friction |
| 37 | 2 | 850-84 | Brake Housing, Dead Side |
| 38 | 2 | 850-85 | Brake Housing, Live Side |
| 39 | 2 | 850-87 | Plate, Shim |
| 40 | 1 | 850-88 | Lever Asm, Brake - R |
| 41 | 1 | 850-75 | Lever Asm, Brake - L |
| 42 | 1 | 112-143 | SHCS 5/16x1.25 Zn |
| 43 | 1 | 104-27 | Pin, Clevis 5/16x.75" Zn |
| 44 | 1 | 100-100 | Pin, Cotter 1/8x3/4 Zn |
| 45 | 2 | 112-07 | RHMS 10-24 x 1.50 Zn |
| 46 | 1 | 850-86 | Weldment, Mechanical Brake Bracket - L |
| 47 | 1 | 850-89 | Weldment, Mechanical Brake Bracket - R |
| 48 | 2 | 128-18 | Spring, Extension 3/8" x 1.625" |

7.0 Vehicle Body & Firewall

Avenger Parts Manual



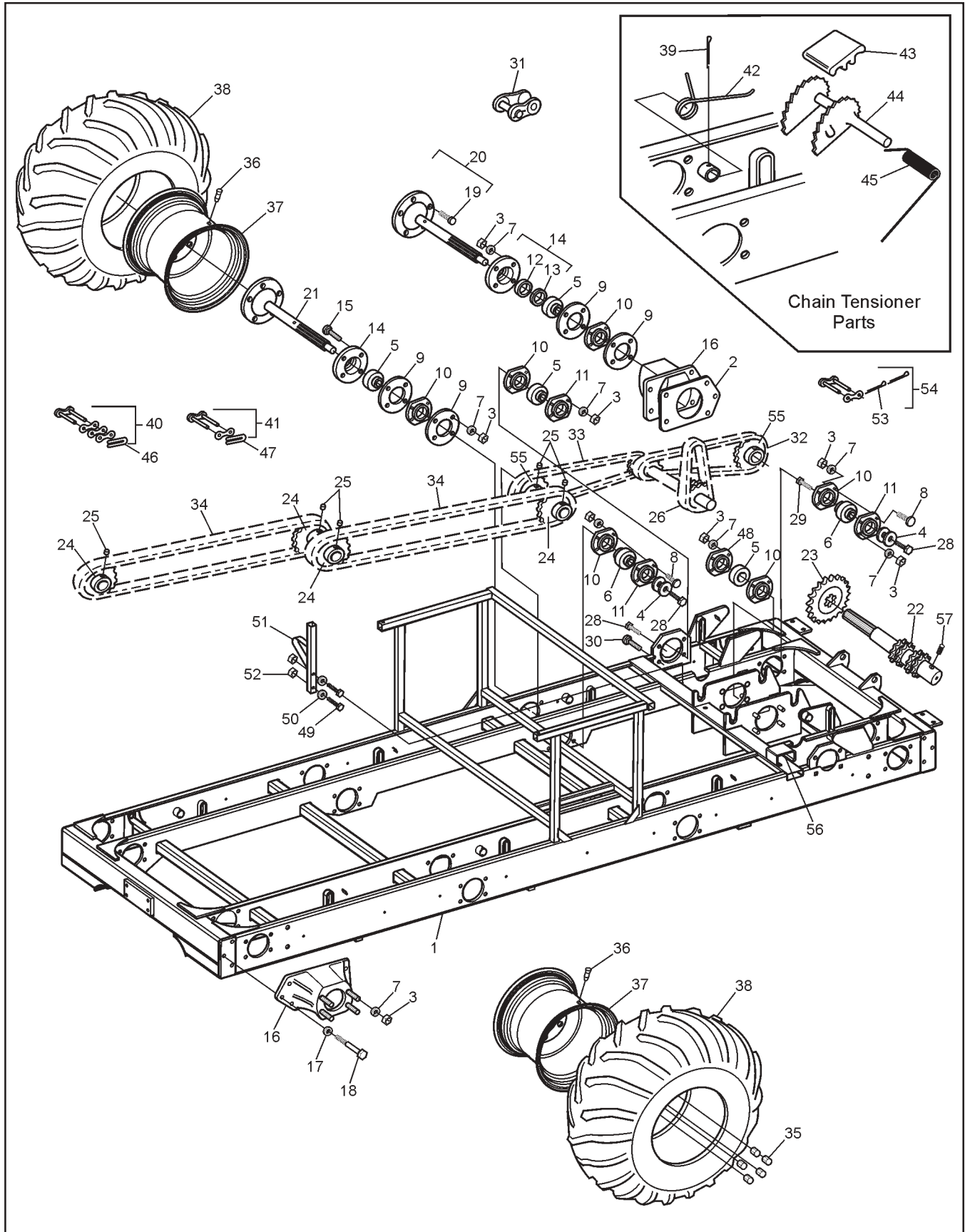
Avenger Parts Manual

7.0 Vehicle Body & Firewall

| Ref. | Qty. | Part # | Description | Ref. | Qty. | Part # | Description |
|------|------|---------|--|------|------|---------|--|
| 1 | 1 | 707-43 | Screen - Exhaust - Avenger | 39 | 2 | 117-44 | T- Nut 1/4-20 Zn |
| 2 | 1 | 601-44 | Nameplate, "Argo" | 40 | 84 | 120-04 | Washer .19 x .50 x .08 Zn |
| 3 | 2 | 127-45B | Knuckle, Hinge | 41 | 32 | 120-27 | Pin, Magna Grip |
| 4 | 2 | 127-45A | Pin, Hinge | 42 | 32 | 120-28 | Collar, Magna Grip |
| 5 | 1 | 601-101 | Tube, Dash Handle | 43 | 1 | 801-51 | Skid Plate, 8x8 - Black |
| 6 | 2 | 100-109 | Cup holder Insert | 44 | 1 | 801-52 | Body & Hood, Upper - Avenger (spec. colour) (incl. 23, 33, 34, 35, 37, 38) |
| 7 | 1 | 126-68 | Plate, Operation | 45 | 109 | 120-09 | Rivet 3/16 x 1 - Black |
| 8 | 1 | 707-42 | Screen, Intake - Avenger | 46 | 8 | 103-48 | T/S Pan HD PHIL #10 x 5/8 |
| 9 | 1 | 608-64 | Seat, Rear - Left | 47 | 4 | 126-79 | Bumper, Plastic - Black |
| 10 | 1 | 100-108 | Mesh, Glove Box | 48 | 20 | 108-25 | Washer .31 x .75 x .06 Zn |
| 11 | 2 | 126-10 | Wing Stud | 49 | 4 | 801-41 | Washer, Seat |
| 12 | 1 | 803-60 | Firewall, Avenger | 50 | 4 | 108-03 | Lockwasher 1/4 |
| 13 | 1 | 608-65 | Seat, Rear - Right | 51 | 6 | 112-04 | HHCS 1/4-20 x 3/4 Gr2 Zn |
| 14 | 1 | 126-67 | Plate, Floor Pan | 52 | 1 | 126-60 | Vinyl Strip, 1/2" x 1/4" x 37.5' |
| 15 | 1 | 127-142 | Plate, Vehicle Capacity - Avenger | 53 | 8 | 108-59 | Lockwasher #10 Int. Tooth Zn |
| 16 | 2 | 127-01 | Reflector, Red | 54 | 9 | 103-47 | HHCS 10-24 x 1/2 |
| 17 | 1 | 803-58 | Floor Pan, Rear - Avenger | 55 | 1 | 113-12 | Insert, 1/2-13 |
| 18 | 1 | 127-141 | Label, Caution - Keyswitch | 56 | 1 | 108-35 | Washer .53 x 1.06 x .09 Zn |
| 19 | 1 | 126-69 | Plate, Fuel | 57 | 1 | 112-151 | HHCS 1/2-13 x 1" Gr2 Zn |
| 20 | 2 | 127-138 | Nameplate - Avenger | 58 | 1 | 613-37 | Terminal Strip, Ground |
| 21 | 2 | 601-09 | Trim, Vinyl - 28" | 59 | 13 | 120-13 | Rivet, 3/16 x 5/8 Black |
| 22 | 2 | 126-09 | Grommet, Alum. Flattened Half | 60 | 1 | 117-10 | Locknut, 10-24 N/I Zn |
| 23 | 1 | 602-49 | Frame Ass'y, Hood - Front | 61 | 38 | 120-24 | Rivet, 3/32 x 3/8 Alum. (all plates) |
| 24 | 1 | 801-05 | Bumper, Vinyl - 8x8 | 62 | 2 | 100-114 | Gasket, Drain Plug |
| 25 | 1 | 803-59 | Floor Pan, Front - Avenger | 63 | 2 | 117-82 | Locknut, Flange 1/4-20 Zn |
| 26 | 1 | 801-50 | Body, Lower - Avenger | 64 | 1 | 602-51 | Frame Ass'y, Hood - Rear |
| 27 | 2 | 100-107 | Plug, Drain - Flanged | 65 | 1 | 127-144 | Label, Warning - HOT |
| 28 | 1 | 104-13 | Pin, Toplink - 3/4 x 2.75 | 66 | 5 | 120-30 | Rivet, 5/32 x .65 Black |
| 29 | 1 | 616-16 | Hitch Assembly | 67 | 6 | 120-05 | Washer, .19 x .50 x .04 Zn |
| 30 | 1 | 616-19 | Tube, Hitch | 68 | 2 | 602-52 | Clip, Hood - Avenger |
| 31 | 4 | 103-61 | HHCS 3/8-24 x 1.5 Gr5 Zn | | | | |
| 32 | 1 | 104-11 | Pin, Lynch - Ring | | | | |
| 33 | 4 | 120-15 | Rivet - 1/8 x 7/16 | | | | |
| 34 | 2 | 112-19 | Screw, IHWH T/C Slot 1/4-20 x 1/2 | | | | |
| 35 | 1 | 126-11 | Spring, Retaining | | | | |
| 36 | 33 | 120-11 | Rivet 5/32 x 9/16 - Black | | | | |
| 37 | 1 | 601-69 | Plate, Spring | | | | |
| 38 | 1 | 602-47 | Hood Kit - Avenger (spec. colour) (incl. 3, 4, 11, 22, 53, 54, 59, 68) | | | | |

8.0 Frame and Drive System

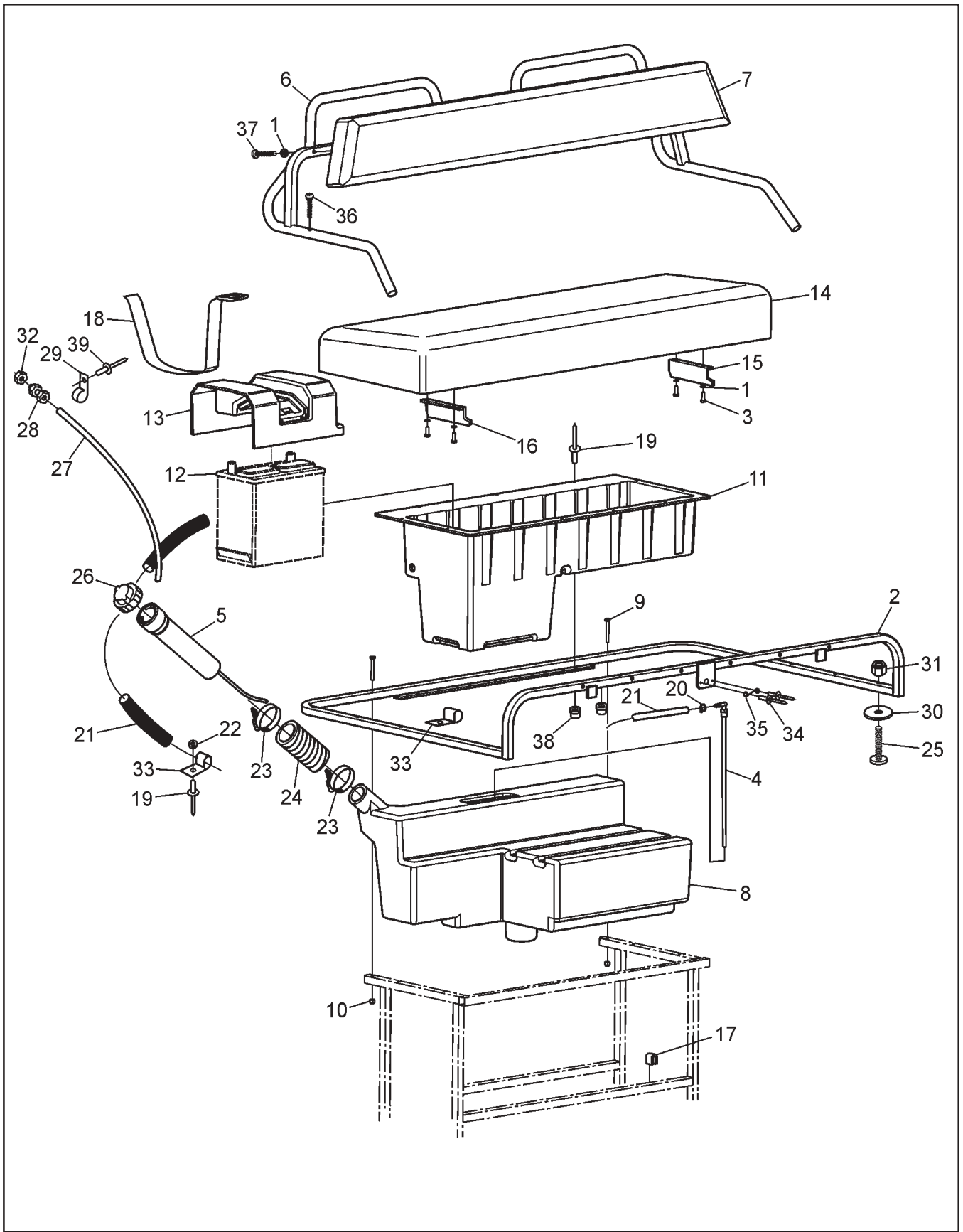
Avenger Parts Manual



Avenger Parts Manual

8.0 Frame and Drive System

| Ref. | Qty. | Part # | Description | Ref. | Qty. | Part # | Description |
|------|------|---------|---|------|------|-----------|--------------------------------|
| 1 | 1 | 806-10 | Frame Asm - Avenger | 37 | 8 | 127-61C | Rim - 10 x 9 - Charcoal |
| 2 | 4 | 606-25 | Gasket - Bearing Extension | 38 | 8 | 127-100SA | Tire, Rawhide III 25 x 11.50-9 |
| 3 | 80 | 117-29 | Locknut, Nylon 3/8-16 Zn | 39 | 8 | 100-01 | Pin, Cotter 1/8 x 1.50 Zn |
| 4 | 16 | 108-46 | Washer .40 x 1.37 x .12 Hi-Carbon | 40 | 1x4 | 100-96 | Con. Link, RC50-2 H.D. |
| 5 | 12 | 101-35 | Bearing, Ball - 1.25 | 41 | 1x4 | 603-84 | Con. Link, RC60-1 H.D. |
| 6 | 8 | 101-41 | Bearing, Ball - 1.0 | 42 | 8 | 127-65 | Spring Torsion - 1.16x0.35 |
| 7 | 80 | 108-15 | Washer, .42 x .81 x .05 Zn | 43 | 8 | 606-39 | Slider Block -1/2" Shaft |
| 8 | 31 | 103-88 | C/Bolt 3/8-16 x 1.0 Gr5 Zn | 44 | 8 | 606-35 | Tensioner Asm, Chain |
| 9 | 16 | 605-89 | Gasket, Flange - Outer | 45 | 8 | 127-64 | Spring, Torsion - .76 x 1.9 |
| 10 | 20 | 605-63 | Flange - 4 hole | 46 | 4 | 603-95 | Spring Clip - RC 50 Closed |
| 11 | 10 | 101-20 | Flange, Greasable - 4 hole | 47 | 4 | 603-96 | Spring Clip - RC 60 Closed |
| 12 | 8 | 102-14 | Seal, Oil 1.25 x 1.75 x 0.188 | 48 | 2 | 101-80 | Flange, Greaseable - 90 Degree |
| 13 | 8 | 102-15 | Seal, Oil 1.25 x 1.874 x 0.25 | 49 | 2 | 103-97 | HHCS 1/4-20 x 1.25 |
| 14 | 8 | 605-97 | Flange Asm, Outer (incl. Refs. 12 & 13) | 50 | 4 | 108-08 | Washer .28 x .62 x .07 |
| 15 | 16 | 112-39 | C/Bolt 3/8-16 x 1.75 Gr5 Zn | 51 | 1 | 806-43 | Support Asm, Firewall |
| 16 | 4 | 810-91 | Bearing Extension | 52 | 2 | 117-27 | Locknut, Nylon 1/4-20 |
| 17 | 20 | 108-34 | Washer .47 x .94 x .06 Zn | 53 | 4 | 104-35 | Pin, Cotter 2mm x 12mm |
| 18 | 20 | 112-150 | HHCS 7/16-20 x 1.5 Gr5 Zn | 54 | 2 | 603-94 | Con. Link, RC60-1 Cotter Pin |
| 19 | 5x8 | 103-80 | Stud, Wheel 7/16-20 x 1.125 #B271 | 55 | 4 | 810-28 | Sprocket, Double - 24T |
| 20 | 4 | 810-73 | Axle Asm - Front/Rear (incl. Ref. 19) | 56 | 2 | 606-43 | Slide, Chain - 2-3/4" |
| 21 | 4 | 810-75 | Axle Asm - Mid (incl. Ref. 19) | 57 | 4 | 112-60 | SHSS 1/4-28 x 1/2 Cup Pt. |
| 22 | 2 | 810-59 | Shaft, Idler - 11T | | | | |
| 23 | 2 | 606-72 | Sprocket, Idler S60 x 21T | | | | |
| 24 | 8 | 606-34 | Sprocket, S60 x 19T | | | | |
| 25 | 10 | 112-03 | SHSS 5/16-18 x 3/8 1/2 DOG, PL | | | | |
| 26 | 2 | 803-54 | Chain, Idler RC60-1 x 34P (incl. Ref. 55) | | | | |
| 28 | 12 | 112-31 | HHCS 3/8-16 x 1.0 2B Gr8 Zn | | | | |
| 29 | 1 | 103-82 | HHCS 3/8-16 x 1.5 Gr5 Zn | | | | |
| 30 | 4 | 112-61 | C/Bolt 3/8-16 x 1.25 Gr5 Zn | | | | |
| 31 | | 127-80 | Link, Half - RC60 - 1 (opt.) | | | | |
| 32 | 2 | 803-55 | Chain, RC50-2 x 46P-Front (incl. Ref. 40) | | | | |
| 33 | 2 | 803-56 | Chain, RC50-2 x 74P-Mid (incl. Ref. 40) | | | | |
| 34 | 4 | 803-57 | Chain, RC60-1 x 90P-Rear (incl. Ref. 41) | | | | |
| 35 | 5x8 | 117-35 | Nut, Wheel 7/16-20 Zn | | | | |
| 36 | 8 | 125-26 | Valve, Tire | | | | |

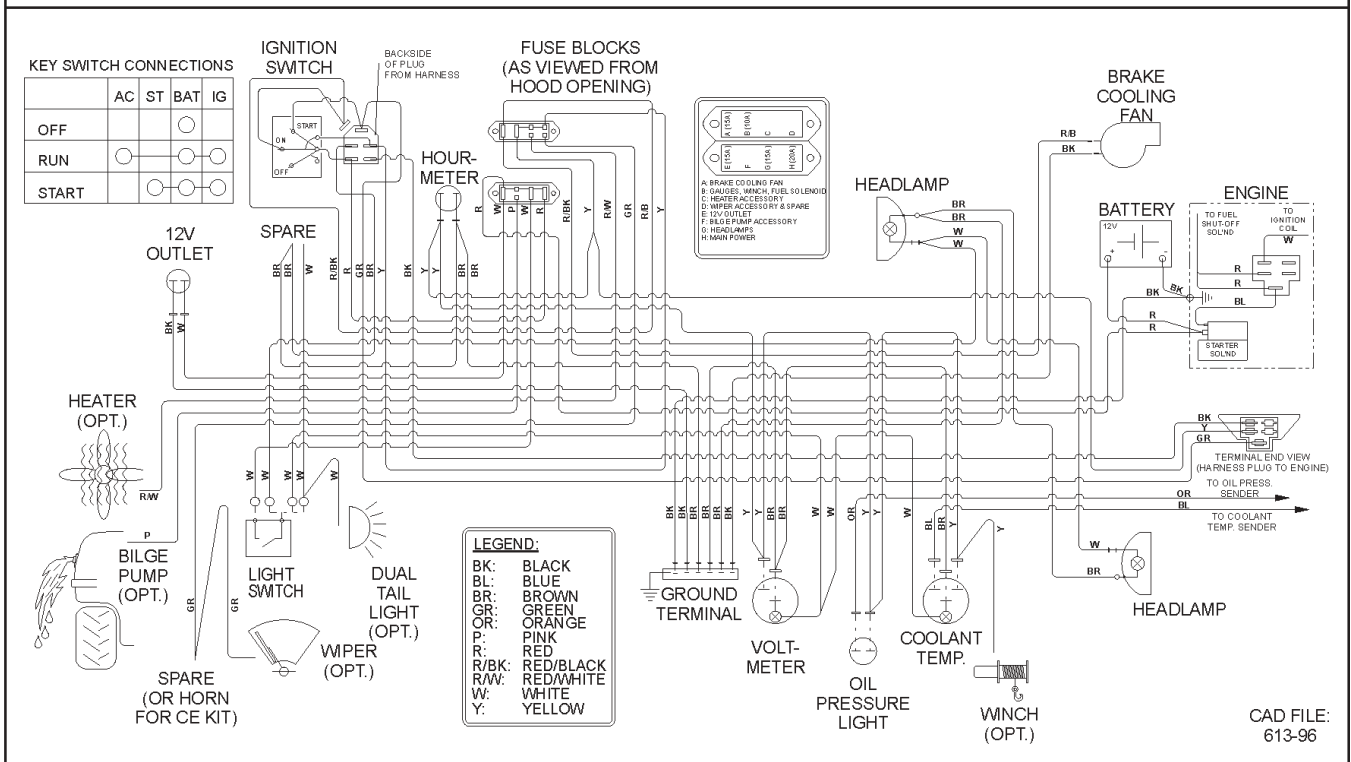
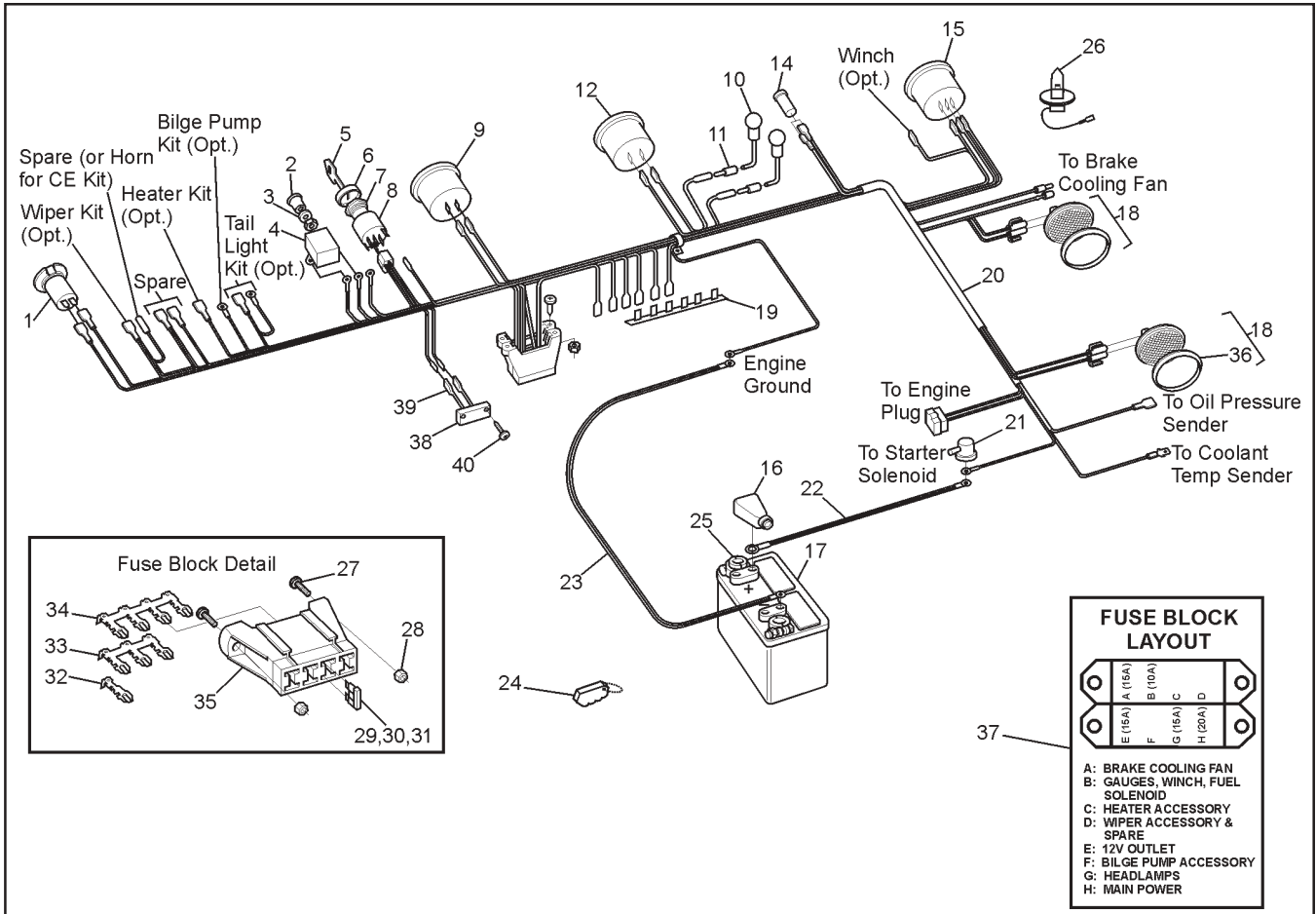


Avenger Parts Manual 9.0 Fuel System & Seat Assembly

| Ref. | Qty. | Part # | Description |
|------|------|--------|--|
| 1 | 8 | 108-03 | Lockwasher 1/4 Split Ring Zn |
| 2 | 1 | 608-61 | Frame Assembly, Seat |
| 3 | 4 | 112-04 | HHCS 1/4-20x3/4 Gr2 Zn |
| 4 | 1 | 608-52 | Tube Assembly, Fuel Pick-up |
| 5 | 1 | 608-59 | Neck Assembly, Vented Filler |
| 6 | 1 | 608-47 | Frame Assembly, Backrest |
| 7 | 1 | 608-39 | Back pad Assembly |
| 8 | 1 | 608-44 | Tank, Fuel - Argo |
| 9 | 2 | 103-77 | HHCS, 1/4-28 X 2.0 |
| 10 | 2 | 117-01 | Locknut, Nylon 1/4-28 Zn |
| 11 | 1 | 608-54 | Toolbox |
| 12 | 1 | 127-54 | See Section 9.0 Electrical System |
| 13 | 1 | 608-55 | Cover, Battery |
| 14 | 1 | 608-45 | Seat Assembly, Bench |
| 15 | 1 | 608-57 | Retainer, Seat - Left |
| 16 | 1 | 608-58 | Retainer, Seat - Right |
| 17 | 4 | 702-06 | Foam Cushion |
| 18 | 1 | 608-56 | Strap, Battery |
| 19 | 15 | 120-09 | Rivet 3/16x1 - Black |
| 20 | 2 | 112-79 | Clamp, Hose, 1/2" - Black |
| 21 | 1 | 608-66 | Hose, Fuel - 80" |
| 22 | 8 | 120-04 | Washer .19 x .50 x .08 Zn |
| 23 | 2 | 100-12 | Clamp, Gear 2.25" HF-36 |
| 24 | 1 | 125-94 | Hose, Filler |
| 25 | 10 | 112-07 | RHMS 10-24x1.50 Zn |
| 26 | 1 | 126-46 | Cap, Fuel |
| 27 | 1 | 127-21 | Hose, Vent - 86" |
| 28 | 1 | 126-50 | Male Connector, 1/4" |
| 29 | 6 | 126-94 | Clamp, Nylon Wire - 1/4"ID |
| 30 | 10 | 108-42 | Washer .21x1.0x.06 Zn |
| 31 | 10 | 117-10 | Locknut, Nylon #10-24 Zn |
| 32 | 1 | 117-54 | Nut, Locking PAL 1/2-20 Zn |
| 33 | 7 | 126-93 | Clamp, Nylon Wire - 1/2"ID |
| 34 | 2 | 120-15 | Rivet, 1/8 x 7/16 |
| 35 | 1 | 126-11 | Spring |
| 36 | 2 | 112-41 | PHMS, Phil 1/4-20 x 1.25 Zn |
| 37 | 4 | 103-03 | PHMS, Phil 1/4-20 x 1.50 Zn |
| 38 | 2 | 117-64 | Insert, 1/4-20 Steel Cad Pltg. |
| 39 | 4 | 120-13 | Rivet, 3/16 x 5/8 Black |

10.0 Electrical System

Avenger Parts Manual



| Ref. | Qty. | Part # | Description |
|------|------|---------|---|
| 1 | 1 | 613-90 | Outlet, 12 Volt DC |
| 2 | 1 | 126-76 | Knob, Light - Black |
| 3 | 1 | 108-55 | Lockwasher 7/16 Ext. Tooth Zn |
| 4 | 1 | 100-62 | Switch, Light |
| 5 | 2 | 127-108 | Key, Molded |
| 6 | 1 | 127-107 | Bezel - Cover, Nut |
| 7 | 1 | 127-106 | Nut, Flanged - Plastic |
| 8 | 1 | 127-105 | Switch - Ignition |
| 9 | 1 | 632-15 | Hourmeter #85005C-22 |
| 10 | 2 | 634-10 | Light Kit, #06215-00 5/8" Dia. |
| 11 | 3 | 118-02 | Terminal, Male #76-1251 |
| 12 | 1 | 633-10 | Voltmeter #07583-15 (#830EM) |
| 14 | 3 | 634-08 | Light, Indicator |
| 15 | 1 | 634-23 | Gauge, Water Temp. - Avenger |
| 16 | 1 | 127-55 | Cap, Battery Terminal - Red |
| 17 | 1 | 127-54 | Battery, Exide 45-60 |
| 18 | 2 | 613-92 | Headlamp Ass'y - Oval w/Bezel (incl. items 26 & 36) |
| 19 | 2 | 613-37 | Terminal Strip, Ground |
| 20 | 1 | 613-96 | Wire Harness, Kohler 25HP |
| 21 | 1 | 613-46 | Insulator, Terminal (2 ga.) |
| 22 | 1 | 613-94 | Wire, Positive Battery |
| 23 | 1 | 613-95 | Wire, Negative Battery |
| 24 | 1 | 681-00 | FOB, Key - Floating |
| 25 | 2 | 127-56 | Terminal, Battery Post |
| 26 | 2 | 127-46 | Bulb, Headlight - Halogen 37W |
| 27 | 2 | 112-51 | Screw, IHWH T/C #10-24 x 5/8 |
| 28 | 4 | 117-10 | Locknut, Nylon #10-24 Zn |
| 29 | 1 | 118-52 | Fuse, 10A 2 Prong (AT010) |
| 30 | 3 | 118-49 | Fuse, 15A 2 Prong (AT015) |
| 31 | 1 | 118-53 | Fuse, 20A 2 Prong (AT020) |
| 32 | 9 | 118-62 | Terminal - Fuse, single |
| 33 | 1 | 118-63 | Terminal - Fuse, triple |
| 34 | 1 | 118-61 | Terminal - Fuse, quad |
| 35 | 2 | 118-60 | Block - Fuse, 8 position (4 fuse) |
| 36 | 2 | 613-93 | Bezel, Headlamp - Avenger |
| 37 | 1 | 127-143 | Label, Fuse Panel - B&S |
| 38 | 1 | 613-99 | Light, Shifter Illumination |
| 39 | 2 | 118-69 | Terminal, 3/16 Male Blade 22 Ga |
| 40 | 2 | 112-139 | OHPS T/S #4 x 5/8 Black Zn |

ARGO Products Manufactured by:

Ontario Drive & Gear Limited

220 Bergey Court
New Hamburg, Ontario
Canada N3A 2J5
Phone: (519) 662-2840
Fax: (519) 662-2421

ODG *Dedicated to quality and performance*